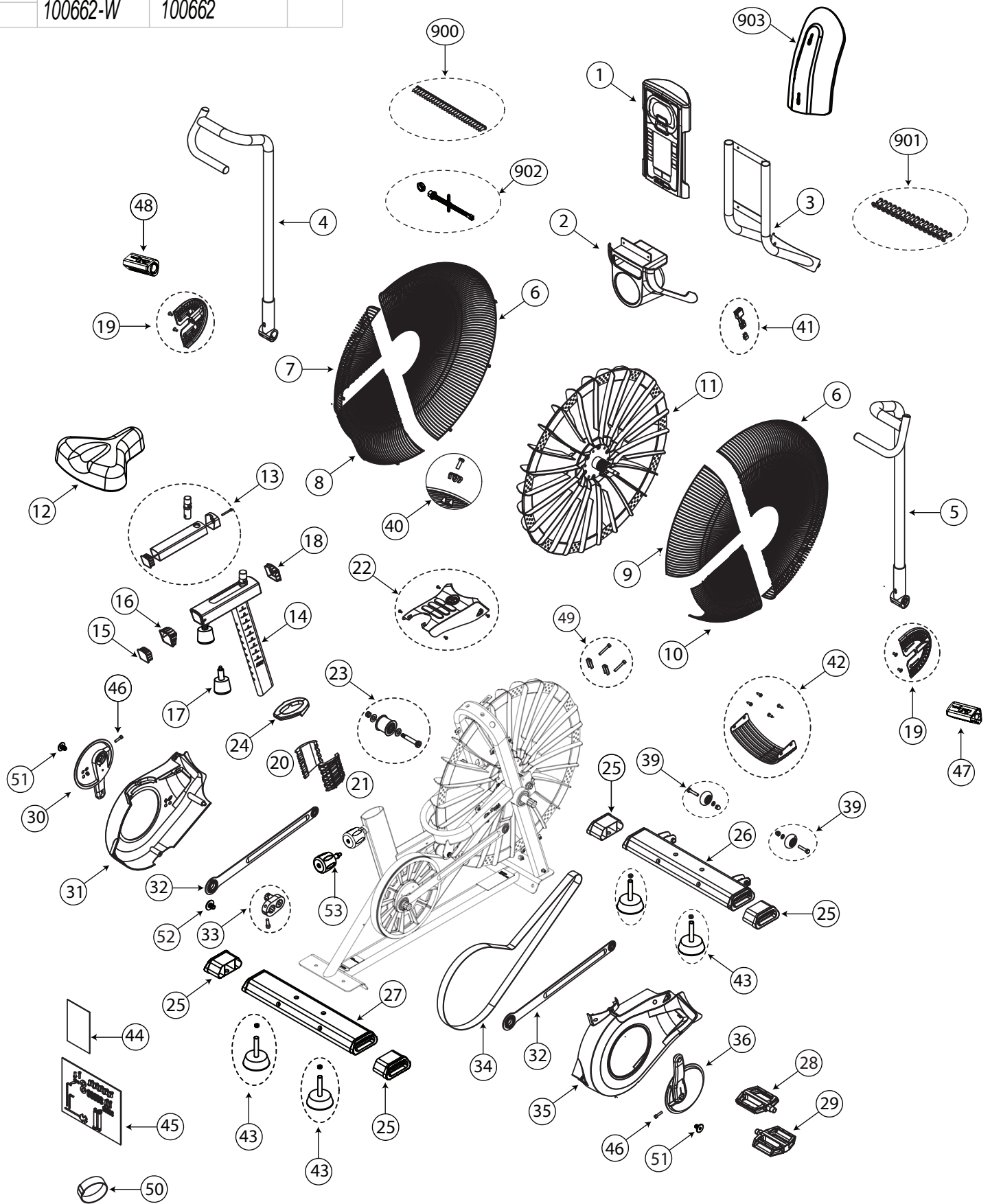


TITLE: EXP VIEW DWG- OCTANE AIRDYNE X			
DRAWN	DOC. PART NO.	PRODUCT SKU NO.	REV.
DATE	100662-W	100662	



Bubble #	Item Number	Item Name
1	8015256 rev A	SERVICE KIT - ADX CONSOLE
2	8007988 rev D	BOTTLE HOLDER, AD PRO
3	8013632 rev A	WELDMENT CONSOLE MAST ADX
4	8013648 rev B	ASSEMBLY LEFT HANDLEBAR ADX
5	8013649 rev B	ASSEMBLY, RIGHT HANDLEBAR, ADX
6	8008285 rev A	WELDMENT, FAN CAGE, FRONT
7	8008286 rev B	WELDMENT, FAN CAGE, TOP, LEFT
8	8008275 rev B	WELDMENT, FAN CAGE, BOTTOM, LEFT
9	8008283 rev B	WELDMENT, FAN CAGE, TOP, RIGHT
10	8008284 rev B	WELDMENT, FAN CAGE, BOTTOM, RIGHT
11	8013606 rev B	ASSY, FAN, ADX
12	8013637 rev A	SEAT ASSEMBLY, ADX
13	8009390 rev A	SERVICE KIT, AD SEAT SLIDER
14	8013642 rev A	ASSY SEAT POST ADX
15	8007302 rev B	END CAP, REAR SEAT SLIDER, AD PRO
16	8007296 rev B	END CAP SEAT SLIDER AD PRO
17	8013630 rev A	POP PIN, ADX
18	8007301 rev C	END CAP, FRONT SEAT SLIDER, AD PRO
19	8009330 rev A	SERVICE KIT, FAN ADJ PLATE
20	8007463 rev B	SEAT POST, PLASTIC, SLIDER LEFT SIDE AD-PRO
21	8007462 rev B	SEAT POST, PLASTIC, SLIDER RIGHT SIDE AD-PRO
22	8015262 rev A	SERVICE KIT - ADX TOP SHROUD
23	8009325 rev B	SERVICE KIT, REAR IDLER PULLEY
24	8013618 rev A	GROMMET, PLASTIC FRAME, TOP, ADX
25	8008068 rev D	END CAP, STABILIZER, AD PRO
26	8013601 rev A	ASSY, FRONT STABILIZER, ADX
27	8013603 rev A	ASSY, BACK STABILIZER, ADX
28	8011565 rev A	PEDAL, 9/16", LEFT, AD PRO
29	8011562 rev A	PEDAL, 9/16", RIGHT, AD PRO
30	8013629 rev A	ASSY, CRANK AND SHROUD, LEFT, ADX
31	8007531 rev C	OVERMOLD, SHROUD, MAIN FRAME, LEFT, AD-PRO
32	8009323 rev C	SERVICE KIT, INSIDE LINKAGE ARM
33	8015264 rev A	SERVICE KIT - ADX CRANK WELDMENT
34	8013469 rev B	SERVICE KIT, AD PRO/8 DRIVE BELT & INSTRUCTIONS
35	8007521 rev C	OVERMOLD, SHROUD, MAIN FRAME, RIGHT, AD-PRO
36	8013628 rev A	ASSY, CRANK AND SHROUD, RIGHT, ADX
39	8015257 rev A	SERVICE KIT - ADX TRANSPORT WHEEL
40	8014887 rev A	SERVICE KIT, FAN CAGE CLIP, AD PRO
41	8008115 rev B	ASSY, SENSOR BOARD AND HOUSING
42	8009331 rev A	SERVICE KIT, PLASTIC FILLER FAN CAGE
43	8013596 rev A	FOOT, LEVELER, ADX
44	8013655 rev F	DOCUMENT KIT, ADX
45	8013670 rev B	HARDWARE CARD ASSY, ADX
46	8009622 rev B	SCREW, SCKT-HD CAP, M10-1.25 x 40 CL12.9 BlkZ, WITH NYLOK
47	8007992 rev B	SUB ASSY, FOOT PEG, RIGHT
48	8007994 rev B	SUB ASSY, FOOT PEG, LEFT
49	8009321 rev B	SERVICE KIT, SPINDLE CLIP
50	8006565 rev A	STRAP, TRANSPORT AND IMMOBILIZATION, 25X640mm
51	8013666 rev C	SCREW, B HAT, M10, w/LOCTITE DRI-LOC 2040 (OR EQV) PATCH
52	8013667 rev C	SCREW, B HAT, M12, w/LOCTITE DRI-LOC 2040 (OR EQV) PATCH
53	8023079 rev C	ASSEMBLY, POP PIN INSERT
900	8009332 rev B	SERVICE KIT, SHROUD HARDWARE
901	8009334 rev A	SERVICE KIT, FAN CAGE HARDWARE
902	8009326 rev A	SERVICE KIT, DC POWER JACK
903	8008799 rev D	DIVERTER, AIR, AD PRO